



35 Shirland Mews,
Maida Vale, W9

Asking Price £695,000, Freehold

NAPIER WATT

T: 0207 935 0011
E: enquiries@napierwatt.co.uk
W: napierwatt.co.uk

35 Berkeley Square, Mayfair, London, W1J 5BF







Description

SOLE AGENTS Napier Watt are pleased to offer a charming 2 bed freehold house in a mews development. The mews house is in a fantastic position on the street as it overlooks the communal gardens. The house is set over two floors and has a lovely garden, which is perfect for entertaining. Living room, open plan kitchen, 2 bedrooms, bathroom and with private resident only car park.

Shirland Mews is an ideal location, it is a quiet, cobbled Mews close to Little Venice and Queens Park. It has its own car parks and communal garden.

EPC Rating C.

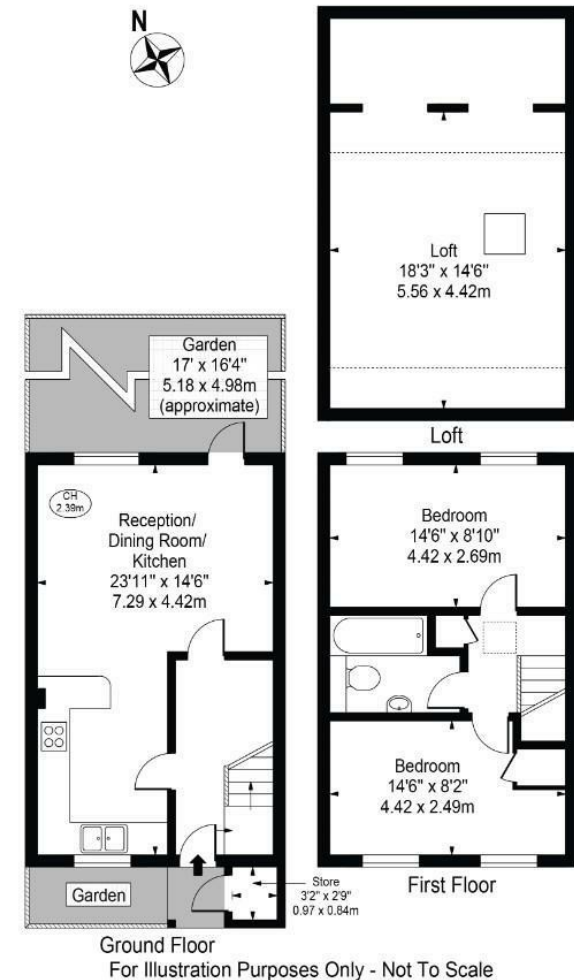
Key Features

- PATIO
- COMMUNAL GARDEN
- CAR PARK
- FREEHOLD HOUSE
- CLOSE TO LITTLE VENICE

Terms

Freehold

Shirland Mews
 Approx. Gross Internal Area 1042 Sq Ft - 96.80 Sq M
 (Including Restricted Height Area & Excluding Store)
 Approx. Gross Internal Area Of Store 9 Sq Ft - 0.81 Sq M



This floor plan should be used as a general outline for guidance only and does not constitute in whole or in part an offer or contract. Any intending purchaser or lessee should satisfy themselves by inspection, searches, enquiries and full survey as to the correctness of each statement. Any areas, measurements or distances quoted are approximate and should not be used to value a property or be the basis of any sale or let.

IMPORTANT: We would inform prospective purchasers that these sales particulars have been prepared as a general guide only. A detailed survey has not been carried out, nor the services, appliances and fittings tested. Room sizes should not be relied upon for furnishing purposes and are approximate. If floor plans are included, they are for guidance only and illustration purposes only and may not be to scale. If there are any important matters likely to affect your decision to buy, please contact us before viewing the property.